

PROMOZIONE A CURA DI:

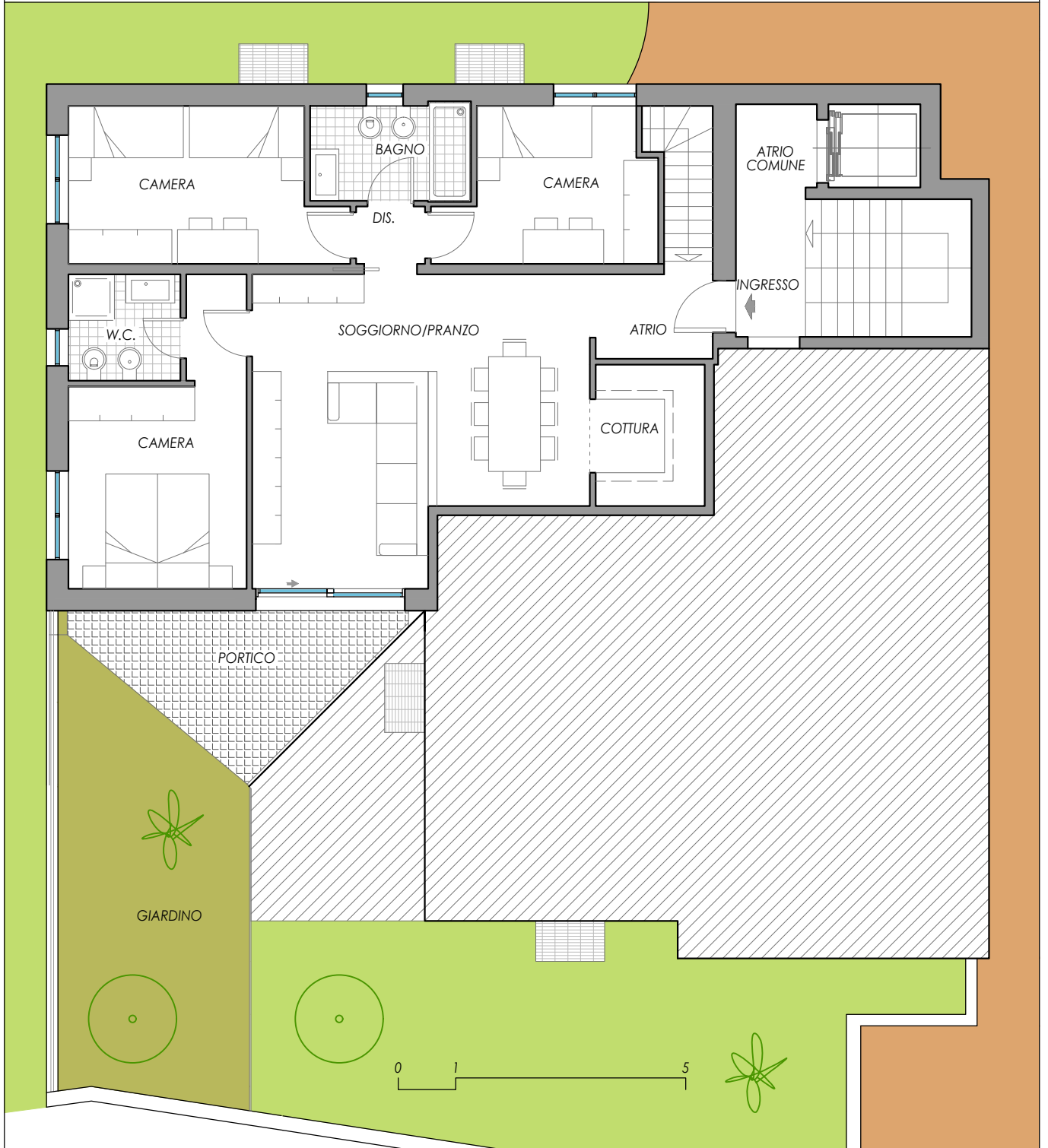
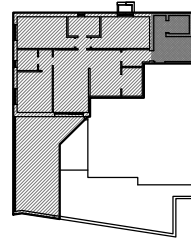
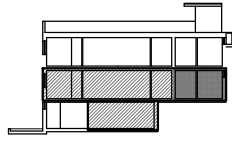


PROGETTAZIONE E DIREZIONE LAVORI A CURA DI:



APPARTAMENTO A 4.5 LIVELLO -2

Appartamento = 101 mq
Portico = 10 mq
Giardino = 23 mq
Disponibile/Lavanderia = 28 mq
Posti auto 2



CHF 895'000.00